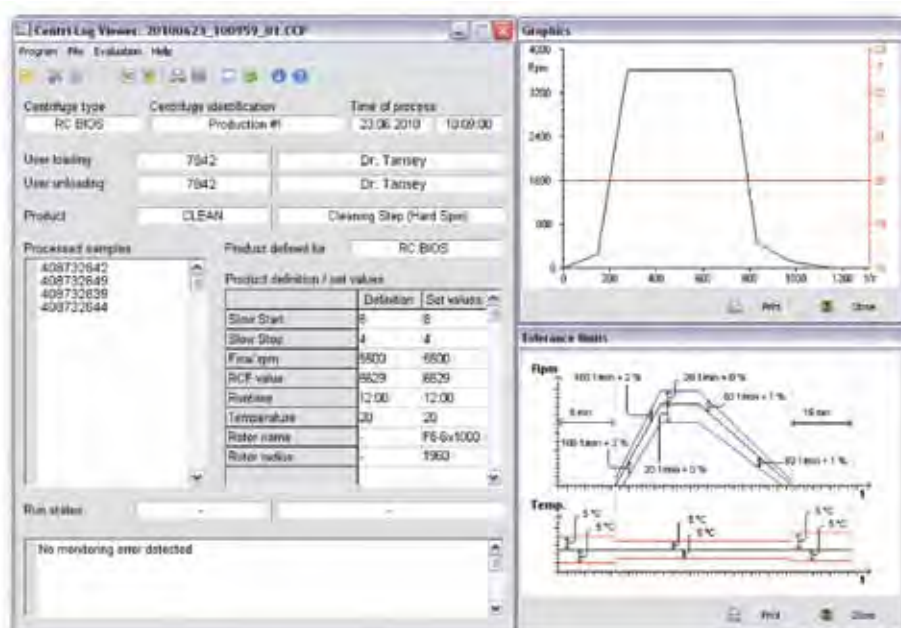


## Thermo Scientific Centri-Log Data Collection Software

A paperless process tracking and compliance solution for high-capacity low-speed centrifuge systems

Thermo Scientific Centri-Log data collection software is a paperless process tracking and compliance solution. This innovative software provides effective quality control for the documentation (logging and monitoring) of centrifugation processes, enabling lifecycle management of processed samples, equipment optimization, and compliance with standard operating procedures.



Accurate data and paperless process documentation with electronic bar code scanner

### Increased Security and Compliance Documentation

Centri-Log™ software includes a suite of functions that provide secure, documented results for regulatory compliance, including audit trails, time/date stamps, security, access controls, user authentication, document versioning, and electronic batch recording.

Real time data display of run parameters for all networked centrifuges can be viewed via a direct connection to the centrifuge system. Logged data is compatible with external reporting systems or tabular and graphical reports can be generated with the included Centri-Log Viewer software

from remote computers. Up to 30 centrifuges can be integrated in a single network and remotely managed from a single desktop.

### Easy to Deploy and Use

Centri-Log traceability software is both rapid to deploy and simple to operate. It features an intuitive graphical user interface with color-coded screens, minimizing key strokes for maximum ease of use. Easy to deploy, Centri-Log software is available with pre-set configurations and support for standard technologies makes set up and deployment easy.



**Benefits**

- Quick, easy, secure and accurate data collection and document management
- Continual monitoring of speed, time, and temperature with alarm messages in case of deviation from protocol
- Ensured sample security and integrity
- Ability to check run parameters against procedures in PC database
- Connect to central database through customized export file
- Eliminate manual recording errors
- Reduce risk of equipment downtime and quality failures
- Centri-Log data collection software network can be customized to fit the needs of your laboratory
- Support for standard technologies: Windows® compatible with RS-232 port/USB: Windows 7, Windows XP and earlier versions: (Windows NT, Windows 98, Windows ME, and Windows)
- Can be used with the following Thermo Scientific centrifuge systems: Heraeus® Cryofuge 5500i, Heraeus Cryofuge 6000i, Heraeus Cryofuge 8500i and Heraeus Multifuge 4KR

**Centri-Log Data Collection Software**

Windows compatible with RS-232 port/USB: Windows 7, Windows XP and earlier versions: (Windows NT, Windows 98, Windows ME, and Windows 2000)  
 Computer not included with software. Customer to provide PC.

Description	Cat. No.
Basic kit for PC w/USB (required for system setup)	75007535
Networking kit for Heraeus Cryofuge 6000i and Heraeus Cryofuge 8500i centrifuges, includes bar code reader (kit required for each centrifuge networked)	75007602
Networking kit for Heraeus Cryofuge 5500i and Heraeus Multifuge 4KR centrifuges, includes bar code reader (kit required for each centrifuge networked)	75007702
Installation kit for first centrifuge (includes power supply)	75007516
Installation kit for each additional centrifuge	75007517

Contact your sales representative to discuss the right Centri-Log networking solution for your laboratory, including integration with GMP models.

© 2010 Thermo Fisher Scientific Inc. All rights reserved. Windows is a registered trademark of Microsoft Corporation in the United States and other countries. HERAEUS is a registered trademark of Heraeus Holding GmbH licensed to Thermo Fisher Scientific. All other trademarks are the property of Thermo Fisher Scientific Inc. and its subsidiaries. Specifications, terms and pricing are subject to change. Not all products are available in all countries. Please consult your local sales representative for details.

