



Smartly programmed.

**supplyLAB**

[www.supplylab.pt](http://www.supplylab.pt)  
[geral@supplylab.pt](mailto:geral@supplylab.pt)

Cacém Park - Edifício 9  
Estrada de Paço de Arcos nº88  
2739-512 Aqualva Cacém  
T +(351) 21 4278700  
F +(351) 21 4278709



[www.weiss-technik.info](http://www.weiss-technik.info)



## Bring out your full potential.

**SIMPATI® can make it happen!**

On the way to Industry 4.0, requirements in the entire production have rapidly risen, as has the demand for 100% quality control. It must be fully integrated into all processes, permit comprehensive traceability, and make it possible to instantly intervene in the event of any deviations.

The flow of production should be maintained without any interference from tests, so that delivery times can be adhered to, and the products are always available anywhere and everywhere in a globalised world. Individual solutions, like the ones frequently used in research and development laboratories, will therefore be discontinued models in the quality assurance of tomorrow.

Weiss Umwelttechnik has been working for years in collaboration with leading process automation manufacturers, and is continually developing its control and documentation software **SIMPATI®**. **SIMPATI®** plays a decisive role in the integration of environmental simulation chambers into the production process.

**SIMPATI®** runs and documents the testing process, visualises the testing procedure and interconnects up to 99 systems in a network. With **SIMPATI®** web, systems can be controlled and monitored via browser control; the specimen can be observed in real time with a camera connection. **SIMPATI®** time labs and **SIMPATI®** time labs infrared display the camera pictures, thereby enabling any changes during the testing process to be precisely monitored, while simultaneously correlating with the measured values. The use of **SIMPATI®** barcode scan enables 100% traceability of process data - for quality certification with no gaps remaining.

supplyLAB  
www.supplylab.pt

Everything at a glance.  
Everything under control.  
Everything perfect.

More comfort and better usability with **SIMPAC®**  
and **WEBSeason®**.

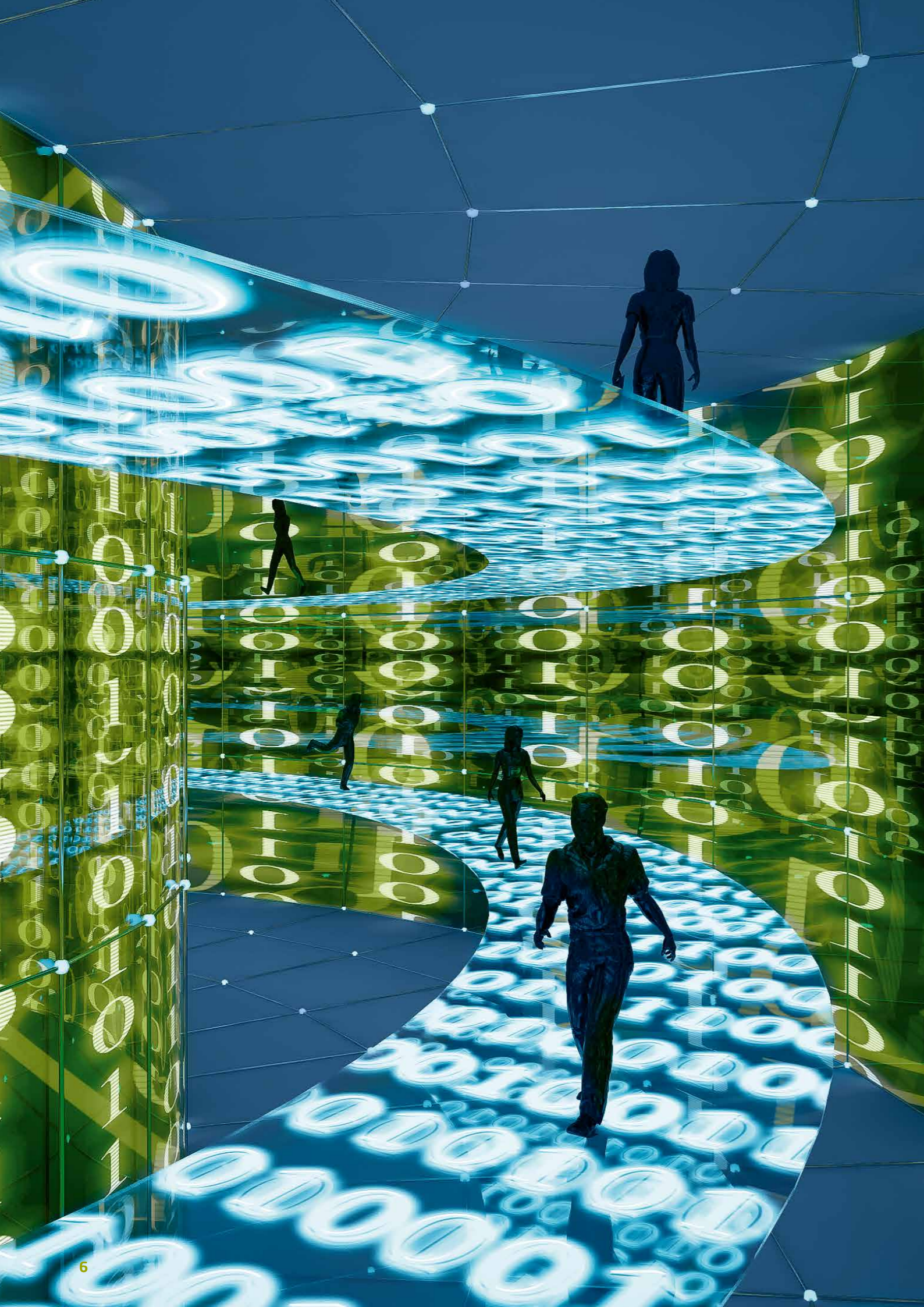


The test chambers are equipped with **SIMPAC®**, the digital measuring and regulation system for control, monitoring and documentation, as standard.

The innovative **WEBSeason®** user interface allows you to program, control and monitor your tests at any time and anywhere. In this way, **WEBSeason®** provides a new dimension of flexibility and efficiency.

- Modern and dynamic design with gesture control for intuitive operation
- The multi-user concept allows several users to have access at the same time, user rights are individually allocated
- Easy programming of test procedures and loops
- Program preview presented as a chart
- Global access, even from tablets and smartphones
- 10 languages and 2 units for temperature and pressure can be set to suit the user and the settings can be saved





## In **SIMPATI**<sup>®</sup>, smart integration is programmed in.

Future-proof use of test systems in intelligent factories.

**SIMPATI**<sup>®</sup>

### Networking

The control software **SIMPATI**<sup>®</sup> makes it possible to optimally integrate environmental testing facilities into smart production processes.

- Ability to create a network of different test systems
- Up to 99 systems can be controlled, including extra measuring instruments

### Managing the Process

Control of the test systems is easier and saves time. The integrated monitoring routines make system operation more reliable. You can individually set the scope and frequency.

- Control test sequences
- Effortlessly write test programmes with the programme editor
- Easily manage programmes for production sequences and tests
- Management and administration of different users and user groups
- Easily configurable e-mail sending process when incidents occur
- Future events can be set and easily displayed via the planner (laboratory management)

### Analysis and Documentation

By analysing and documenting test sequences, as well as including your specific measured data, an improved standard of quality can be guaranteed.

- Store measured data
- Record irregularities and functional disturbances during test sequences
- Print measured data as a chart
- Export measured data into other programmes for computational analysis
- Calculate gradients of process parameters and times of changes to process parameters
- Use clear charts to display analyses

Incidentally: the system can be equipped with infrared sensors for contact-free measurements if desired. This means that the test specimen can be kept intact, and the process will be accelerated.

**SUPPLYLAB**  
www.supplylab.pt

# More networking. More security. More speed.

## Optional SIMPATI® modules for just the right extension in production.

With our additional modules for the SIMPATI® control software, you can optimally adjust the conditions of use to suit your individual needs and processes.



The extension for comfortably monitoring and controlling your systems within the local company network and via a web browser.

- Monitoring of process data anytime, anywhere
- Mobile access while on the move
- Simultaneous control of different systems by multiple users (multi-user operation)
- Access to previously archived measured data
- Ability to constantly view and acknowledge error messages



This optional module makes it possible for electronic, paper-free test documents to be signed with an electronic signature.

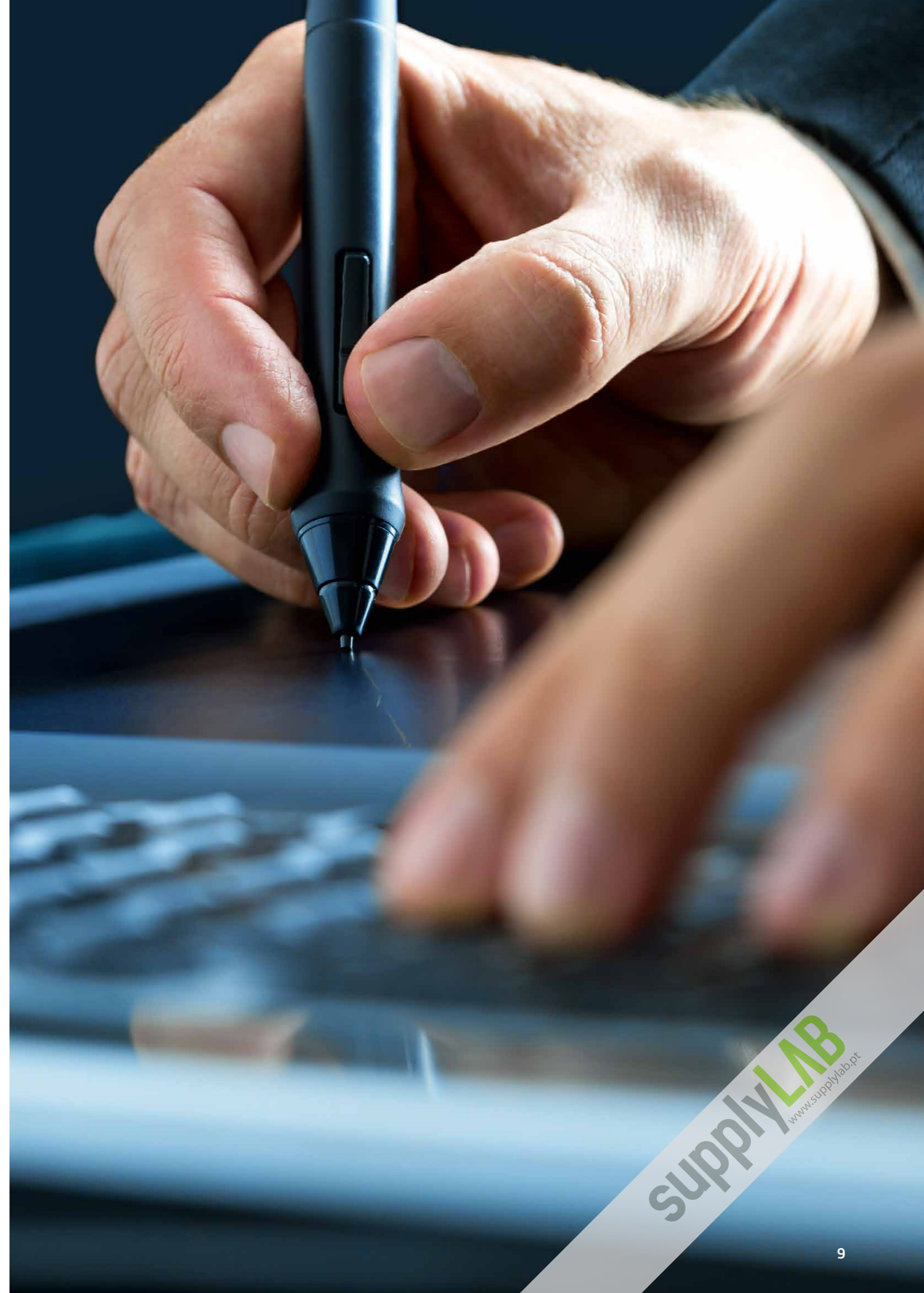
- Capture of genuine, active biometric data based on handwriting
- Legal security through unequivocal identification of the signatory
- Encrypted transfer
- Fulfils all aspects of FDA Guideline 21 CFR Part 11 and EU GMP Annex 11



The optional barcode scanning technology can be ideally used for batch registration and storage management in your system.

- Simple process data scanning
- Can also be used in clean-room areas
- Nearly error-free input of batch numbers and product IDs
- Automatic assignment of process sequences to existing products

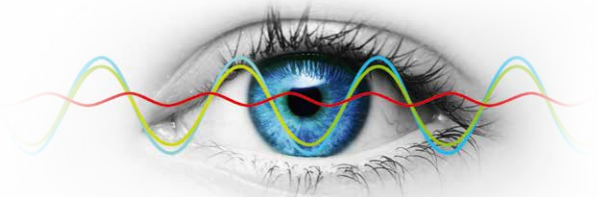
Come and see the demo version of SIMPATI® web for yourself at [www.simpati.com](http://www.simpati.com)  
Just get your username and password from: [info@simpati.com](mailto:info@simpati.com)





# A picture is worth a 1000 readings.

The SIMPATI® time labs visual documentation system.



Digital camera images are generated by specialist software at set intervals and filed in a general archives folder, in addition to and in correlation with the capture of traditional measured data. A combined analysis of measured data and images brings new and valuable findings to light. Especially about when a specific event has occurred.

### SIMPATI® time labs

- Parallel documentation of images and measured data
- Up to 6 cameras in HD quality
- Individual camera selection, be it industry or notebook cameras, endoscopes, microscopes, webcams or thermal imaging cameras

### SIMPATI® time labs documents:

<b>Electronics</b> <ul style="list-style-type: none"><li>• Functional impairment</li><li>• LED/LCD display reactions</li></ul>	<b>Mechanics/movement</b> <ul style="list-style-type: none"><li>• Fan standstill</li><li>• Valve control</li><li>• Valve timing</li></ul>	<b>Dewing</b> <ul style="list-style-type: none"><li>• Surface precipitation</li><li>• Moisture accumulation</li></ul>
<b>Corrosion</b> <ul style="list-style-type: none"><li>• Progress of the process</li></ul>	<b>Liquid level</b> <ul style="list-style-type: none"><li>• Changes to filling level</li></ul>	<b>Material behaviour</b> <ul style="list-style-type: none"><li>• Deformation</li></ul>

**weisstechnik**

**Test it. Heat it. Cool it.**

Our solutions are deployed around the world in research, development, production and quality assurance of numerous products. Our experts from 21 companies are at your service in 14 countries, ready to provide support to ensure high operational reliability of your systems.

Weiss Umwelttechnik is one of the most innovative and significant manufacturers of environmental simulation systems. With these testing systems, we can simulate all climatic conditions around the globe and beyond, under accelerated conditions. Whether temperature, climate, corrosion, dust or combined shock testing: We have the proper solution. We supply systems in all sizes, from standard versions up to customised, process-integrated facilities - for high reproducibility and precise test results.

Vötsch Industrietechnik, a subsidiary of Weiss Umwelttechnik, offers a wide product portfolio in the field of heating technology. With an experienced team of engineers and designers, we develop, plan and produce high-quality and reliable heating technology systems for virtually any field of application. Products include heating/drying ovens, clean room drying ovens, hot-air sterilisers, microwave systems and industrial ovens. The portfolio reaches from technologically sophisticated standard versions to customised solutions for individual production operations.

A further Weiss Technik company, Weiss Klimatechnik, also offers reliable climate solutions wherever people and machinery are challenged: in industrial production processes, hospitals, mobile operating tents or in the area of IT and telecommunications technology. As one of the leading providers of professional clean room and climate solutions, we deliver effective and energy-saving solutions. Our experts will guide you from the planning to the implementation of your projects.

Weiss Pharmatechnik, a subsidiary of Weiss Klimatechnik, is a competent provider of sophisticated clean room and containment solutions. The product range includes barrier systems, laminar flow facilities, security workbenches, isolators and double door systems. The company emerged from Weiss GWE and BDK Luft- und Reinraumtechnik and has decade-long experience in clean room technology.

**supplyLAB**

[www.supplylab.pt](http://www.supplylab.pt)  
[geral@supplylab.pt](mailto:geral@supplylab.pt)

Cacém Park - Edifício 9  
Estrada de Paço de Arcos nº88  
2739-512 Aqualva Cacém  
T +(351) 21 4278700  
F +(351) 21 4278709

**Weiss Umwelttechnik GmbH**

Greizer Straße 41-49  
35447 Reiskirchen/Germany  
Phone +49 6408 84-0  
[info@wut.com](mailto:info@wut.com)  
[www.weiss-technik.info](http://www.weiss-technik.info)

**Weiss Klimatechnik GmbH**

[info@wkt.com](mailto:info@wkt.com)  
[www.wkt.com](http://www.wkt.com)

**Vötsch Industrietechnik GmbH**

**Environmental Simulation**  
[info@v-it.com](mailto:info@v-it.com)  
[www.voetsch-technik.info](http://www.voetsch-technik.info)

**Vötsch Industrietechnik GmbH  
Heat Technology**

[info-wt@v-it.com](mailto:info-wt@v-it.com)  
[www.voetsch-ovens.com](http://www.voetsch-ovens.com)



UT-SIM-01.3E/PP 1.0/10 2016